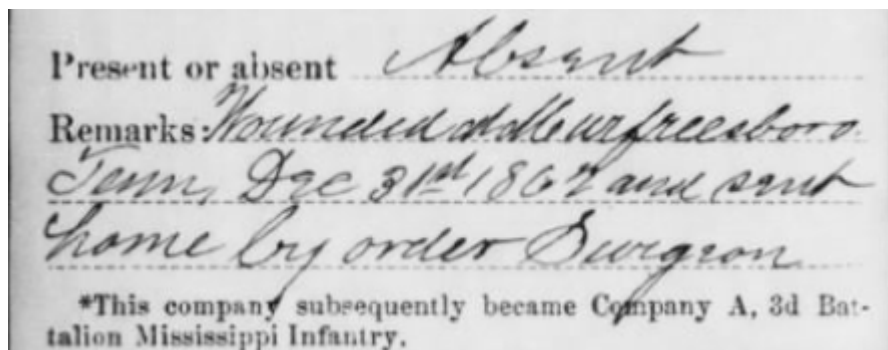


John Wesley Barlow, Sergeant, Co. A, 3rd Battalion Mississippi Infantry, CSA

- 1834 Feb 6: John Wesley Barlow was born in Simpson County, MS to George W. and Flora Ann Barlow.
- 1850 Oct 21: The US Federal Census enumerated in Simpson County, MS listed John Barlow as a seventeen year old farmer. He lived in the household of his father, G.W. Barlow, who was listed as a farmer with \$600 in real estate. The 1850 Slave Schedule listed G.W. Barlow as the owner of nine slaves.
- 1853 John Wesley Barlow married Catharine Mahaffey in MS.
- 1860 Jul 25: The US Federal Census enumerated in Simpson County, MS listed John Barlow as a twenty five year old farmer with \$1,700 in real estate and \$3,500 in his personal estate. He was living with his wife, Catharine, and three children. The 1860 Slave Schedule listed John Barlow as the owner of two slaves.
- 1861 Oct 10: John Wesley Barlow enlisted in Capt. Mark Carlisle's company (Duncan Riflemen) in Simpson County, MS.
- Oct 25: J.W. Barlow was mustered into Capt. M.L. Carlisle's company, 3rd Battalion MS Infantry in Jackson, MS as 4th Sergeant.
- 1862 Jan 15: John Wesley's brother, Nathaniel Green Barlow, enlisted in the 4th MS Infantry as a private.
- Dec 31: Wounded at the Battle of Stones River. Sgt. J.W. Barlow was wounded in the left shoulder.
- 1863 Jan - Apr: Absent from the ranks due to his injury



1864 Nov 30: Sgt. J. W. Barlow fought at the Battle of Franklin. The 3rd MS Infantry Battalion was part of Gen. Mark Lowrey's brigade, part of Gen. Patrick Cleburne's division. They formed the reserve brigade of the three in Cleburne's division and charged the enemy works near the Carter Cotton gin. Sgt. J.W. Barlow was captured at the Battle of Franklin and moved north to Nashville as a prisoner of war.

Dec 2: Sgt. J.W. Barlow appeared on a roll of prisoners of war received at Louisville, KY from Nashville, TN.

Dec 3: Transferred from Louisville, KY to Camp Douglas, IL.

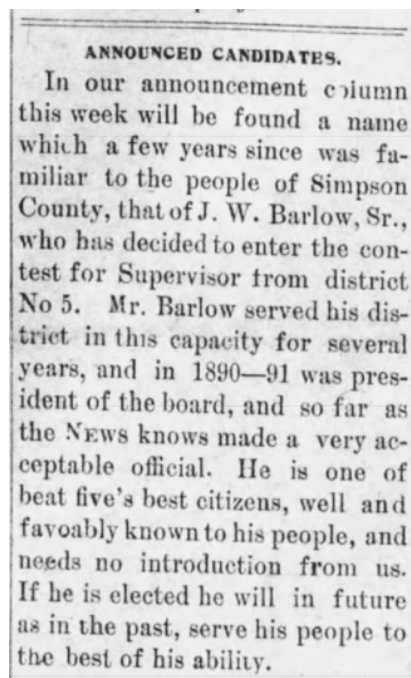
Dec 5: J.W. Barlow appeared on a roll of prisoners of war received from Louisville, KY

1865 Jun 18: Discharged from Camp Douglas, IL after the close of the war.

1870 Jul 22: The US Federal Census enumerated in Simpson County, MS listed John Barlow as a thirty seven year old farmer with \$100 in real estate and \$200 in his personal estate. He lived with his wife and four children.

1880 Jun 16: The US Federal Census enumerated in Simpson County, MS listed as a forty seven year old farmer. He lived with his wife, three children, and a niece.

1899 Mar 2:



ANNOUNCED CANDIDATES.
In our announcement column this week will be found a name which a few years since was familiar to the people of Simpson County, that of J. W. Barlow, Sr., who has decided to enter the contest for Supervisor from district No 5. Mr. Barlow served his district in this capacity for several years, and in 1890—91 was president of the board, and so far as the News knows made a very acceptable official. He is one of beat five's best citizens, well and favorably known to his people, and needs no introduction from us. If he is elected he will in future as in the past, serve his people to the best of his ability.

² The Westville News, Westville, MS, Thursday, 2 Mar 1899, pg. 1.

1900 Jun 9: The US Federal Census enumerated in Simpson County, MS listed John Barlow as a sixty six year old farmer. He lived with his wife, Catharine.

1902 Jul 31:

On motion, a committee of five Confederate Veterans, one from each Supervisors District was appointed to recommend to the Board of Supervisors, at their August meeting, such of their respective districts, as should in their opinion receive a pension. Committee appointed as follows, to-wit.

Beat 1—Joe May,
" 2—H. L. Mangum,
" 3—T. N. Touchstone,
" 4—I. N. Armstrong,
" 5—J. W. Barlow, Sr.

3

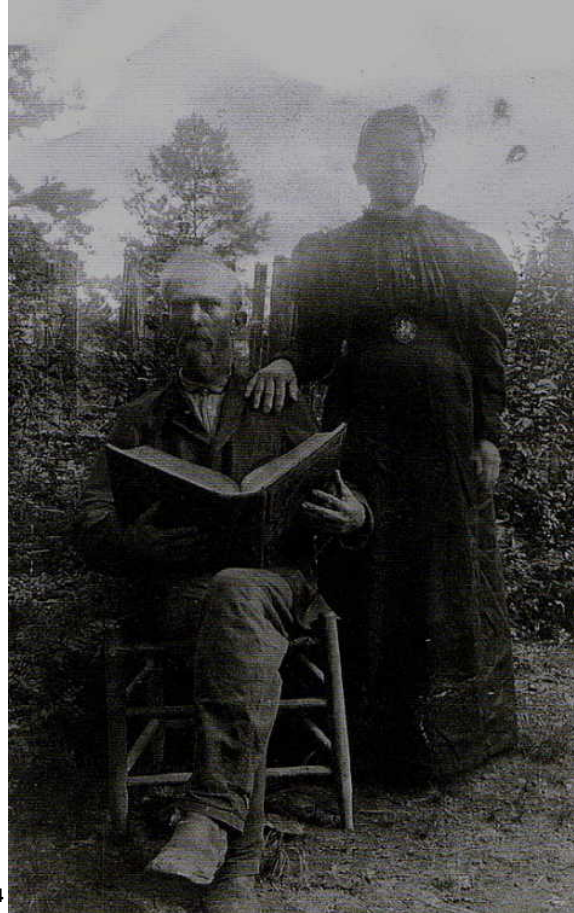
1910 Apr 16: The US Federal Census enumerated in Simpson County, MS listed John W. Barlow at eighty years old. He was unemployed and widowed. He was listed as a veteran of the Confederate Army.

Jul 16: John Wesley Barlow died in Simpson county, MS. He was buried in the Harrisville Cemetery in Harrisville, MS.

³ Simpson County News, Mendenhall, MS, Thursday, 31 Jul 1902, pg. 1.



4



5

⁴ [John Wesley Barlow \(1834-1910\) - Find a Grave Memorial](#)
⁵ [jwesley barlow 5 \(ancestry.com\)](#)